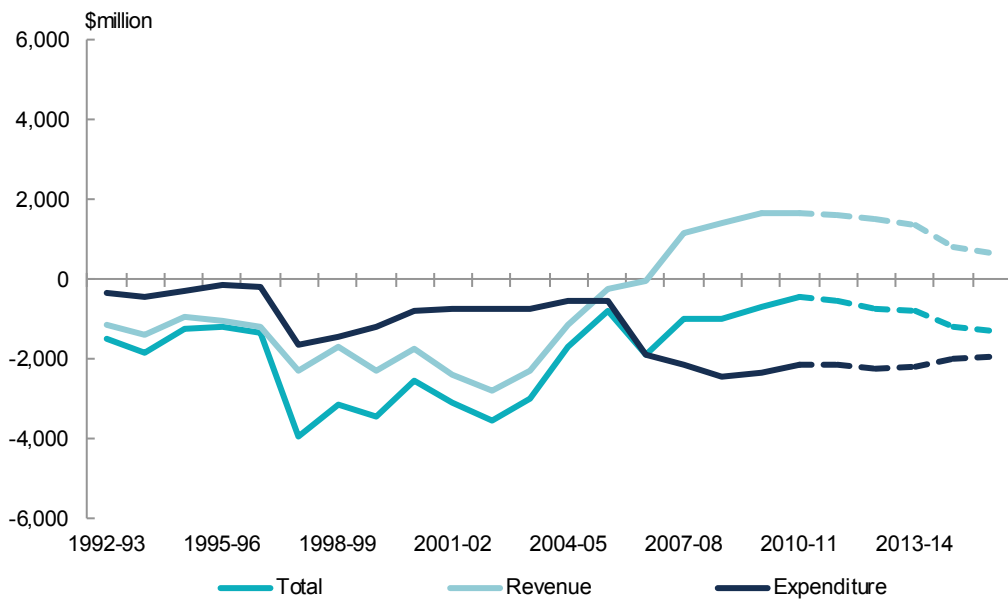


Appendix F: Changes in State fiscal capacities over time

Total redistribution and redistribution due to revenue and expenditure assessments

The following Figures are one way of showing differences in State fiscal capacities over the period since 1992-93 (the dashed lines out to 2015-16 are indicative estimates).¹ The Figures show the total differences from an equal per capita distribution of GST for each State as well breaking this total down into the differences due to the revenue and expenditure assessments.² All of the figures have been rebased in line with growth in nominal GDP, with 2010-11 as the reference year, and all figures relate to assessment years. Figures F1 to F8 present the redistributions in millions of dollars and Figures F9 to F16 present the redistributions in dollars per capita.

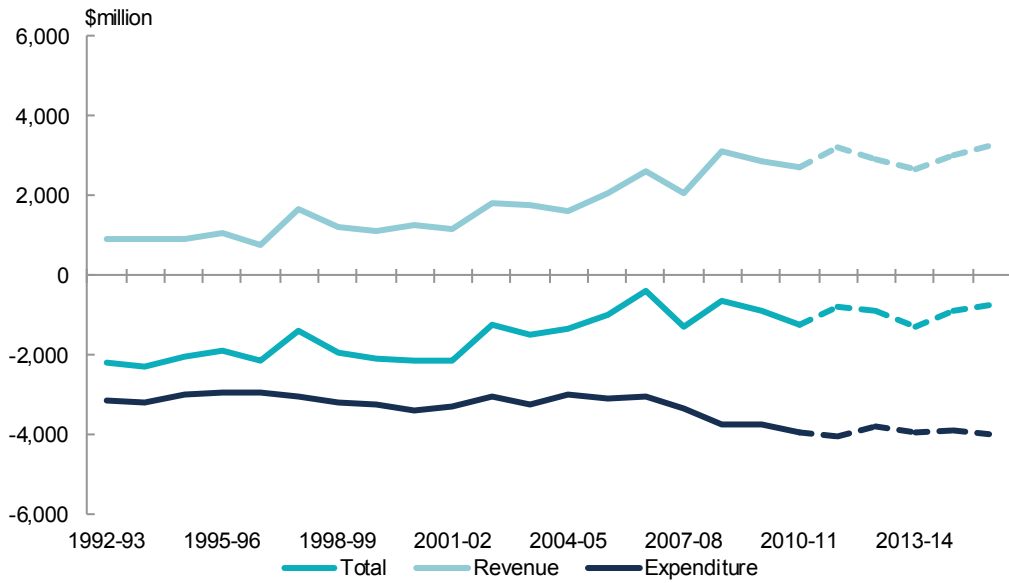
Figure F1: Assessment year needs, NSW, 1992-93 to 2015-16



Source: Commonwealth Grants Commission and Secretariat calculation. Figures based on data available at 5 July 2012.

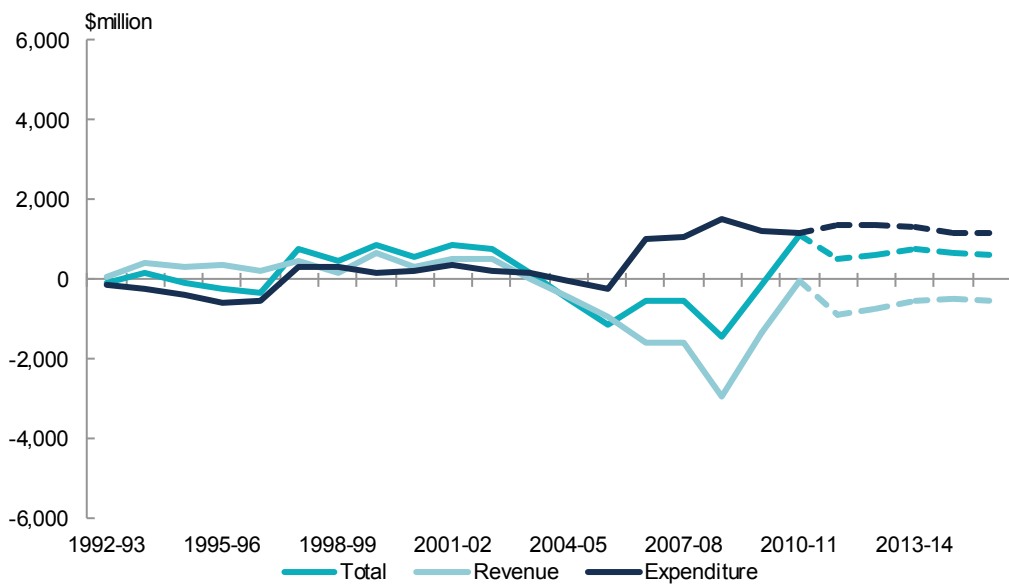
- 1 Estimates for the forward estimates period are based on data from the Secretariat's model agreed with Heads of Treasuries.
- 2 Redistributions due to expenditure assessments include population growth needs from 2006-07.

Figure F2: Assessment year needs, Victoria, 1992-93 to 2015-16



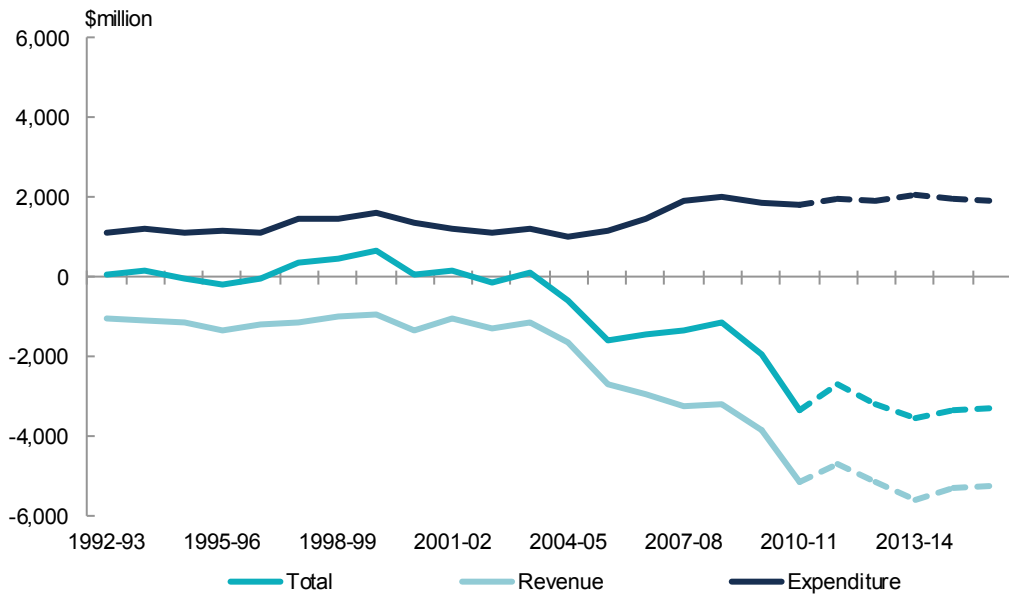
Source: Commonwealth Grants Commission and Secretariat calculation. Figures based on data available at 5 July 2012.

Figure F3: Assessment year needs, Queensland, 1992-93 to 2015-16



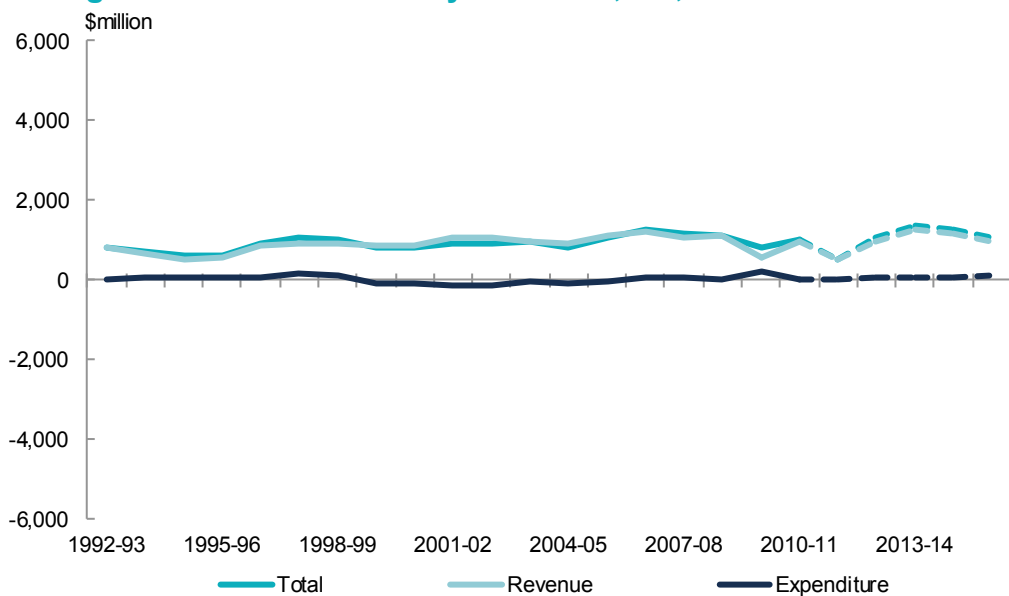
Source: Commonwealth Grants Commission and Secretariat calculation. Figures based on data available at 5 July 2012.

Figure F4: Assessment year needs, WA, 1992-93 to 2015-16



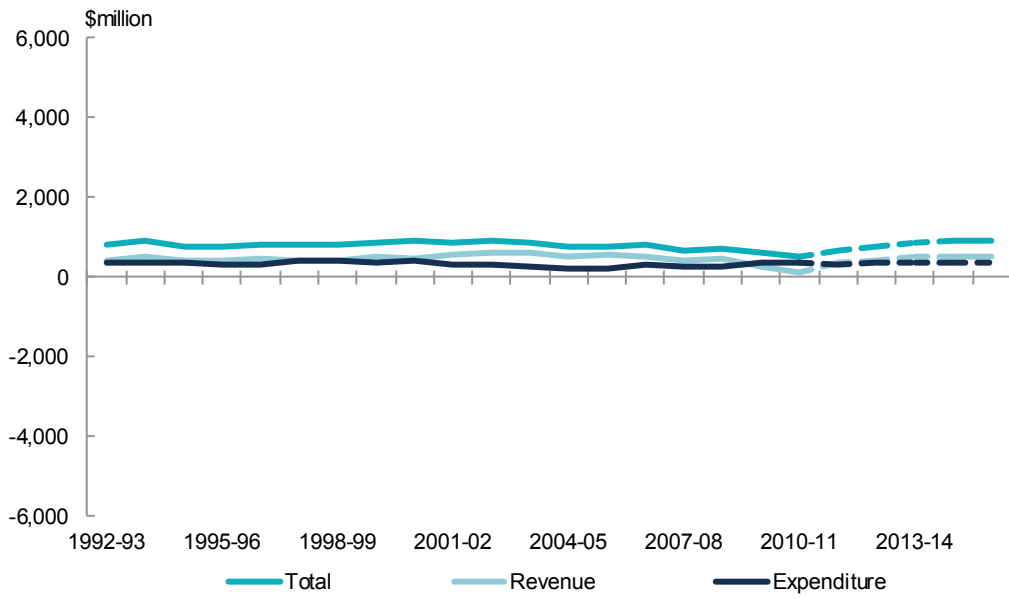
Source: Commonwealth Grants Commission and Secretariat calculation. Figures based on data available at 5 July 2012.

Figure F5: Assessment year needs, SA, 1992-93 to 2015-16



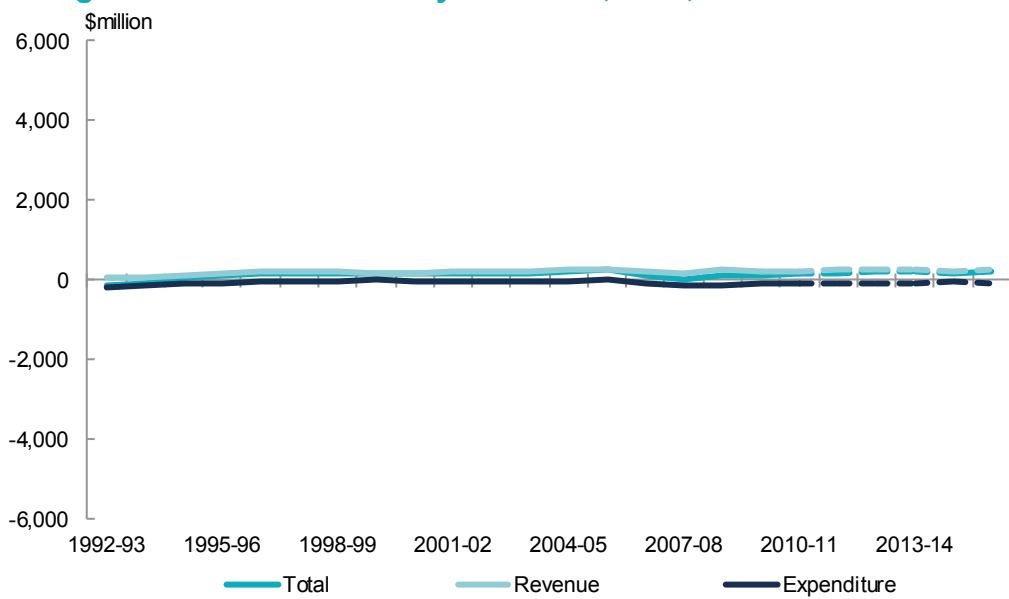
Source: Commonwealth Grants Commission and Secretariat calculation. Figures based on data available at 5 July 2012.

Figure F6: Assessment year needs, Tasmania, 1992-93 to 2015-16



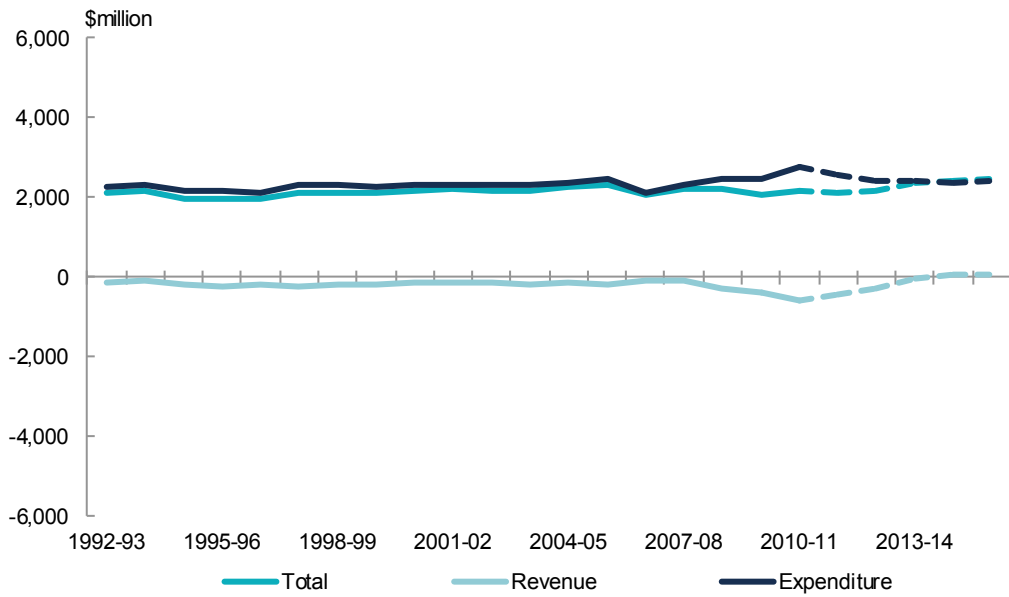
Source: Commonwealth Grants Commission and Secretariat calculation. Figures based on data available at 5 July 2012.

Figure F7: Assessment year needs, ACT, 1992-93 to 2015-16



Source: Commonwealth Grants Commission and Secretariat calculation. Figures based on data available at 5 July 2012.

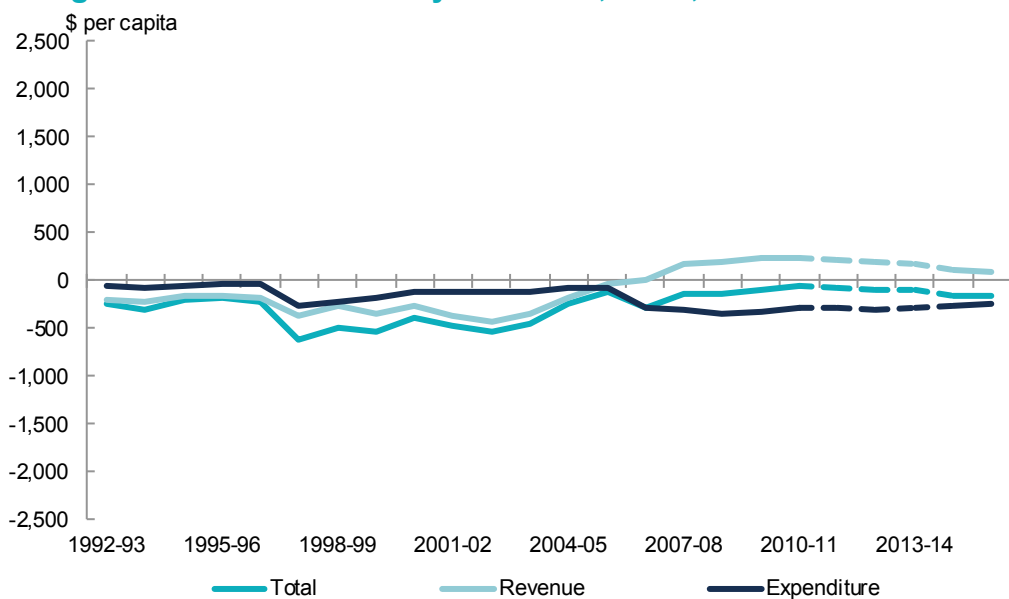
Figure F8: Assessment year needs, NT, 1992-93 to 2015-16



Source: Commonwealth Grants Commission and Secretariat calculation. Figures based on data available at 5 July 2012.

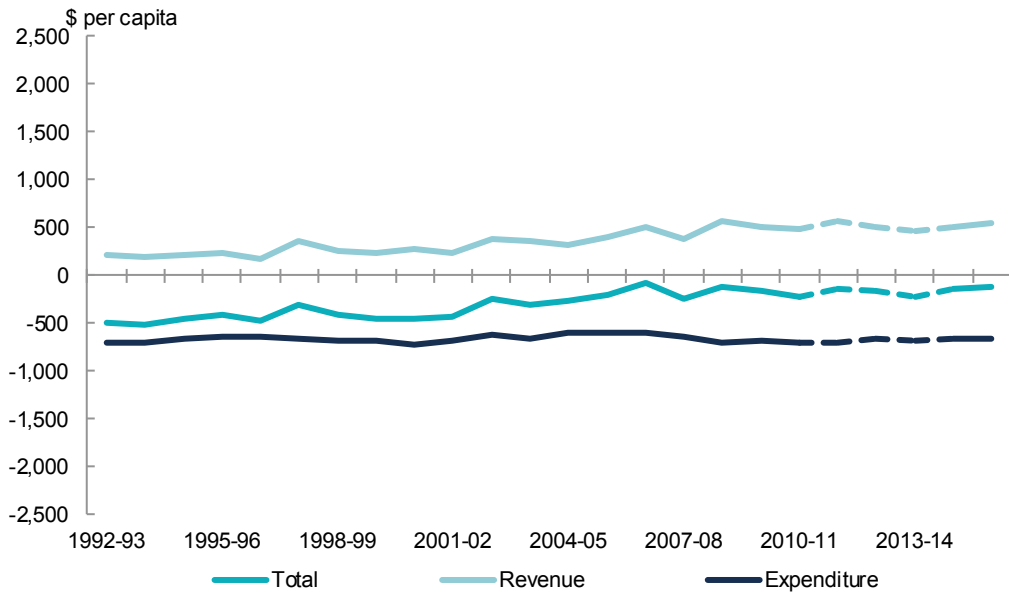
The following Figures show the same information expressed as dollars per capita.

Figure F9: Assessment year needs, NSW, 1992-93 to 2015-16



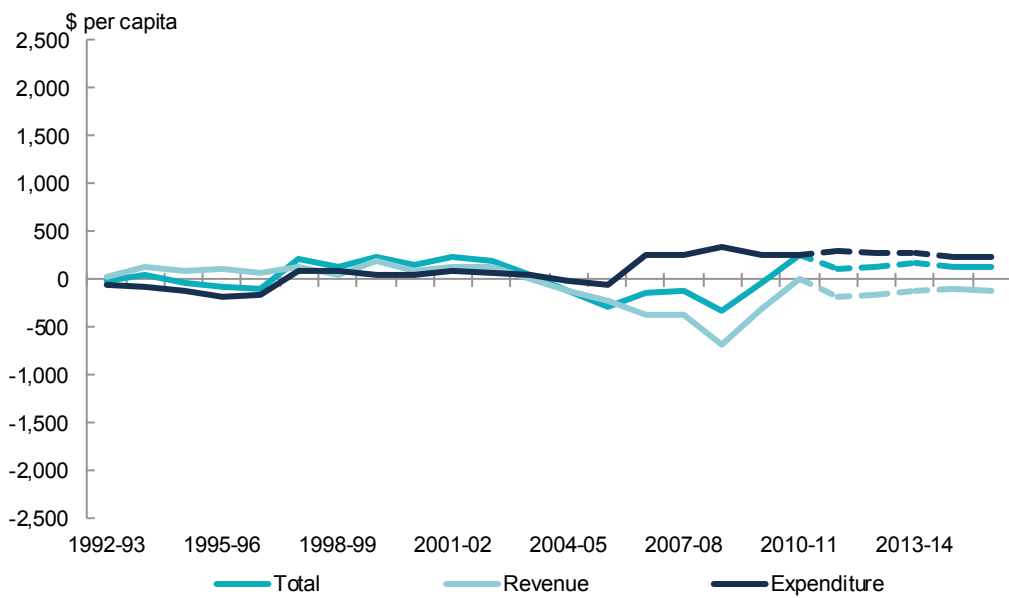
Source: Commonwealth Grants Commission and Secretariat calculation. Figures based on data available at 5 July 2012.

Figure F10: Assessment year needs, Victoria, 1992-93 to 2015-16



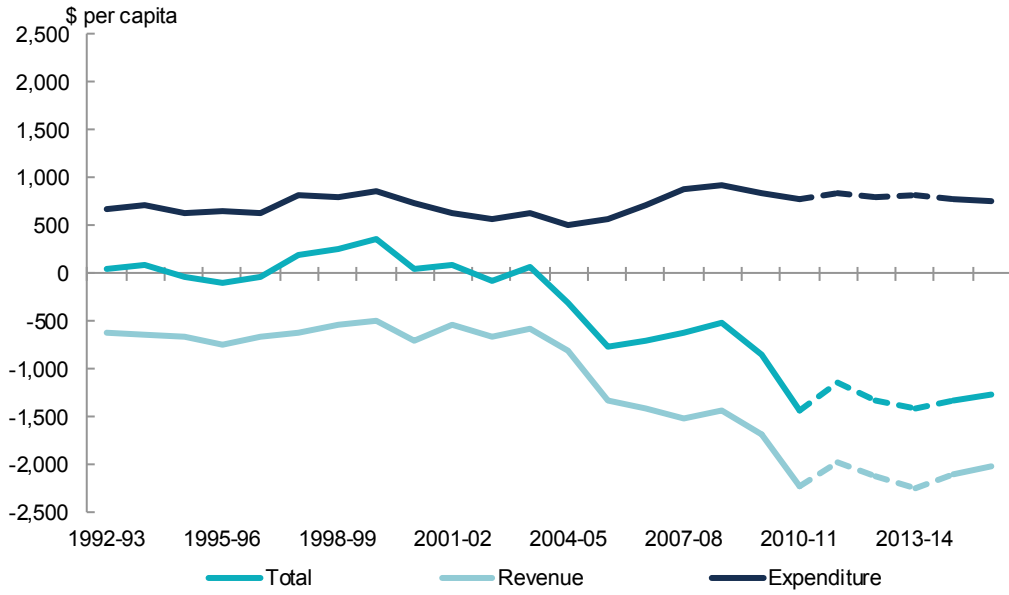
Source: Commonwealth Grants Commission and Secretariat calculation. Figures based on data available at 5 July 2012.

Figure F11: Assessment year needs, Queensland, 1992-93 to 2015-16



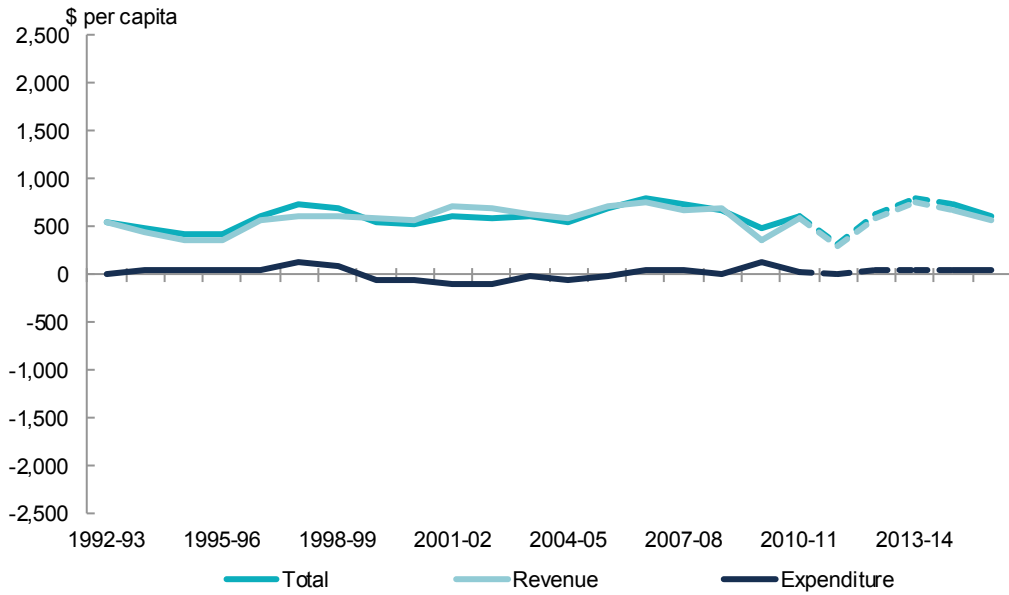
Source: Commonwealth Grants Commission and Secretariat calculation. Figures based on data available at 5 July 2012.

Figure F12: Assessment year needs, WA, 1992-93 to 2015-16



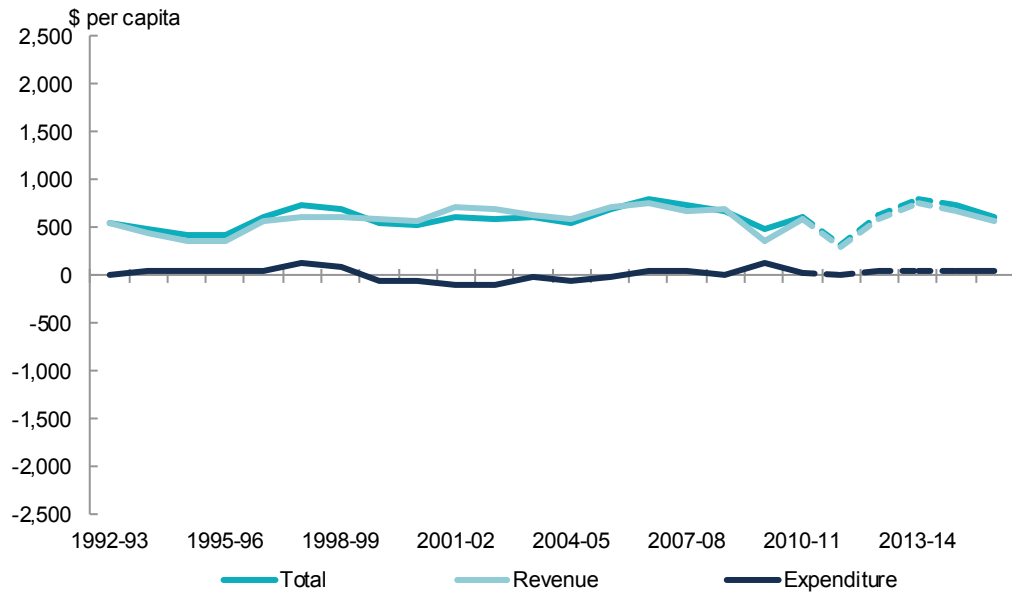
Source: Commonwealth Grants Commission and Secretariat calculation. Figures based on data available at 5 July 2012.

Figure F13: Assessment year needs, SA, 1992-93 to 2015-16



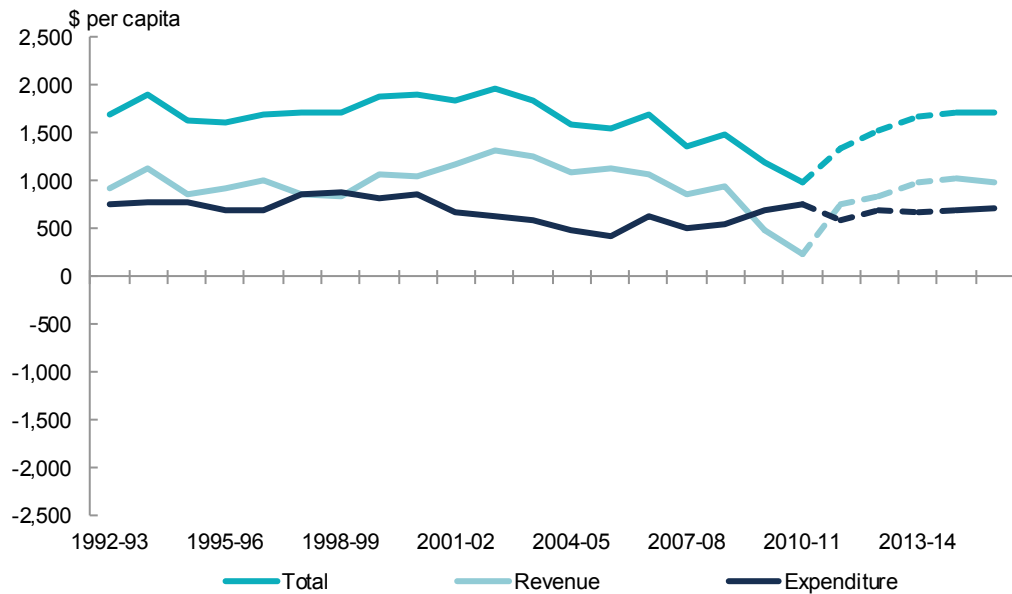
Source: Commonwealth Grants Commission and Secretariat calculation. Figures based on data available at 5 July 2012.

Figure F14: Assessment year needs, Tasmania, 1992-93 to 2015-16



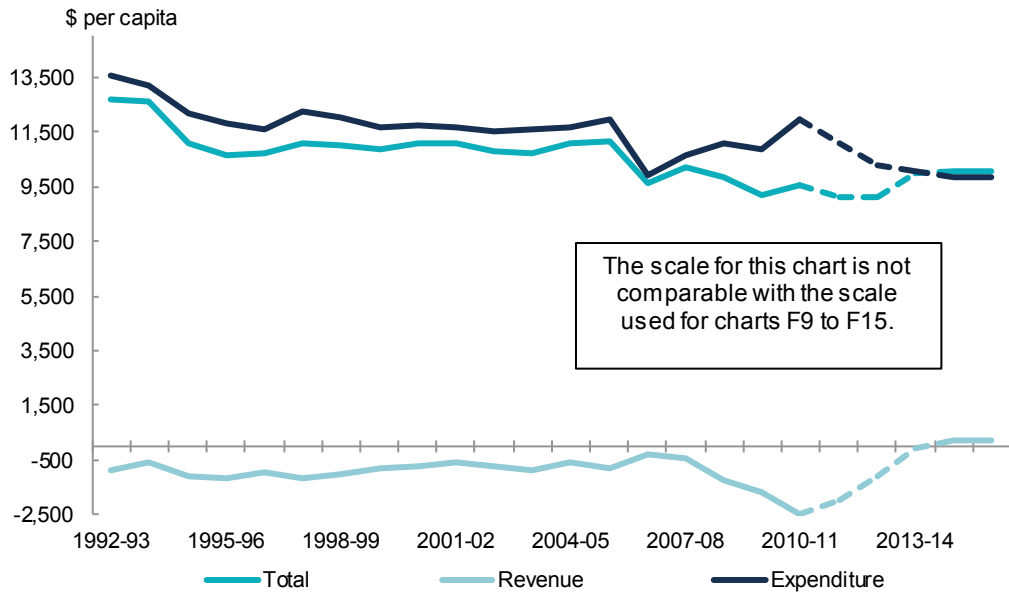
Source: Commonwealth Grants Commission and Secretariat calculation. Figures based on data available at 5 July 2012.

Figure F15: Assessment year needs, ACT, 1992-93 to 2015-16



Source: Commonwealth Grants Commission and Secretariat calculation. Figures based on data available at 5 July 2012.

Figure F16: Assessment year needs, NT, 1992-93 to 2015-16



Source: Commonwealth Grants Commission and Secretariat calculation. Figures based on data available at 5 July 2012.

